

The Proper Criteria for Identification and Sorting of Very Small Embryonic-Like Stem Cells, and Some Nomenclature Issues

Malwina Suszynska,^{1,2} Ewa K. Zuba-Surma,³ Magdalena Maj,¹ Kasia Mierzejewska,²
Janina Ratajczak,^{1,2} Magda Kucia,^{1,2} and Mariusz Z. Ratajczak^{1,2}

Evidence has accumulated that both murine and human adult tissues contain early-development stem cells with a broader differentiation potential than other adult monopotent stem cells. These cells, being pluripotent or multipotent, exist at different levels of specification and most likely represent overlapping populations of cells that, depending on the isolation strategy, *ex vivo* expansion protocol, and markers employed for their identification, have been given different names. In this review, we will discuss a population of very small embryonic-like stem cells (VSELs) in the context of other stem cells that express pluripotent/multipotent markers isolated from adult tissues as well as review the most current, validated working criteria on how to properly identify and isolate these very rare cells. VSELs have been successfully purified in several laboratories; however, a few have failed to isolate them, which has raised some unnecessary controversy in the field. Therefore, in this short review, we will address the most important reasons that some investigators have experienced problems in isolating these very rare cells and discuss some still unresolved challenges which should be overcome before these cells can be widely employed in the clinic.

Introduction

THE NAME “VERY SMALL embryonic-like stem cells” (VSELs) has been assigned to a rare population of small cells that were initially isolated from murine bone marrow (BM) [1–3]. Subsequently, the presence of cells that phenotypically correspond to VSELs has been reported in multiple murine organs [4]. Finally, small cells that, similar to murine VSELs, are lineage negative (lin^-), do not express CD45 antigen (CD45^-), and display a primitive morphology (high nuclear/cytoplasm ratio and the presence of euchromatin in nuclei) have been reported in human (i) umbilical cord blood (UCB) [5–8], (ii) mobilized peripheral blood (mPB) [9–13], and (iii) gonads [14,15]. Human VSELs isolated from UCB and mPB are highly enriched in a population of CD133^+ cells [8,16,17], and those isolated from gonads were sorted as SSEA-4^+ cells [18].

Since a VSEL-specific marker has not yet been identified, these developmentally early cells are currently isolated by a multiparameter sorting strategy employing a cocktail of antibodies and proper gating [17,19–22]. Both murine and human purified VSELs express several early-development markers, including Oct-4, Nanog, SSEA-1 (mouse), and

SSEA-4 (human) [1,8,23] and are highly quiescent [24,25]. Despite their small size, similar morphological features, and phenotype, VSELs are, to some degree, heterogenous. In particular, cDNA libraries created from purified, double-sorted VSELs (20 cells/library) revealed that these cells, while having a characteristic morphology, small size, and overlapping molecular signature, still differ slightly in the expression of some genes [26]. The best method for assessing the quality of sorted VSELs is the combination of ImageStream analysis, which enables the identification of real, nucleated cell events and excludes those from cell debris, with 7AAD staining, which excludes cells that become damaged during the sorting procedure [19,27].

The best-characterized VSELs at the molecular level using microarray analysis are murine BM-derived VSELs [23,26,28] and small SSEA-4^+ cells corresponding to murine VSELs isolated from human gonads [14,29,30]. Therefore, more work is needed to characterize molecular signature of VSELs isolated from other murine organs (eg, brain, heart, and skeletal muscles) and, in particular, the phenotypically corresponding populations of human VSELs in BM, UCB, and mPB. The crucial question to ask is whether VSELs are precommitted to monopotent

¹Stem Cell Institute at the James Graham Brown Cancer Center, University of Louisville, Louisville, Kentucky.

²Department of Physiology Pomeranian Medical University, Szczecin, Poland.

³Department of Cell Biology, Faculty of Biochemistry, Biophysics and Biotechnology, Jagiellonian University, Krakow, Poland.

tissue committed stem cells (TCSCs) in the tissues of their residence.

In this short editorial review, we will address the current validated working criteria for how to properly isolate these rare small cells. This is an important issue, because, as was recently observed, by changing the well-established isolation protocols, an incorrect population of cells was isolated and misidentified as VSELS [31–33]. We will also discuss the relationship of VSELS to other potential pluripotent stem cells (PSCs) and multipotent stem cells (MPSCs), which have been isolated from adult tissues by several other investigators. We noticed that very often cells which correspond to VSELS are given different names [5,6,14,34–38]. Finally, we will also try to justify why we named these cells “embryonic-like,” despite the fact that they are isolated from adult tissues.

Multiparameter Sorting of VSELS—How to Avoid Sorting the Wrong Cell Populations

The current validated strategy for the isolation of cells enriched for VSELS from BM, UCB, or mPB is based on multiparameter sorting of viable small cellular events. Murine VSELS can be isolated as small Sca-1⁺Lin⁻CD45⁻ cells, and this approach has been successfully employed not only by us but also by other independent groups [9,39–41] who followed our detailed sorting protocols [17,19,20,22]. As reported, the highly quiescent populations of VSELS sorted from murine BM in appropriate experimental settings may give rise to hematopoietic stem cells (HSCs) [42], mesenchymal stem cells (MSCs) [40], lung alveolar type II pneumocytes [39], cardiomyocytes [43,44], and gametes and VSELS isolated from rat BM have been shown to give rise to cardiomyocytes and endothelial cells [45]. Moreover, murine VSELS may support the development of stroma in growing tumors [46]. In parallel, human VSELS have been already shown to become specified into HSCs [47] and MSCs [41].

The detailed protocol on how to sort VSELS by FACS has been described in detail in a chapter in *Current Protocols in Cytometry* [19]. Unfortunately, a few other groups significantly modified this protocol, which, instead of VSELS, resulted in an incorrect population of sorted cells [31–33]. This has already been the subject of an extensive analysis that we recently published [21]. However, here, we will address some of the most important issues on how to avoid such mistakes in the future.

The major concern with the work of some groups which reported negative data [31–33] is that, despite their claims, they did not follow our published protocol for isolating VSELS. However, we have to admit that these are not trivial sorting strategies, and failure to isolate these rare cells occasionally happens even in our experience in VSELS sorting hands.

The most critical step in VSEL sorting is proper setting of the gate to exclude contamination by cell debris and small erythroblasts. Enrichment in undesired objects may have a critical impact on subsequent genetic and in vitro functional characterization of these cells. Of great importance, despite the presence of anti-glycophorin antibodies (anti-Ter119) employed in the lineage cocktail to deplete murine lineage-positive cells [19], if the wrong gating strategy is employed,

it may result in unwanted enrichment of the sorted cells for erythroblasts [32]. In brief, one of the groups [32] failed to isolate murine VSELS because of (i) setting up an enlarged input gate on the FSC versus SSC plot that included granulocytes and apoptotic cells resulted in enrichment of sorted fractions with artifacts, which were reflected in their further analyses (eg, Annexin V binding) and excluded some of the critical very small objects from further sorting; (ii) additional loss of very small objects by their exclusion of VSELS by gating for “singlets”; (iii) employing some selection markers that are unproved as VSEL markers (eg, c-kit); and (iv) focusing on some populations and discarding other fractions (potentially containing VSELS) based on results such as Annexin V binding. For instance, the entire fraction of CD45⁻/Lin⁻/Sca-1⁺/c-kit⁻/KDR⁻ cells was excluded by these authors from further sorting [32], because it was deemed “apoptotic,” while it most likely contained not only real Annexin V⁺ FSC^{low} SSC^{dim/hi} apoptotic objects, but, in addition, VSELS. Importantly, we have reported [48] that healthy normal cells (including VSELS and HSCs) may bind Annexin V after lysis of RBCs due to microvesicle/microparticle release and phosphorylserine transfer to the membranes of the normal cells. Thus, not all Annexin V⁺ objects should be interpreted as “apoptotic,” as these may represent normal, functional cells [48]. Figure 1 shows a simulation of sorting strategy employed by one of the groups that failed to sort VSELS [32] to demonstrate how important it is to set a proper gate during sorting of murine BM-residing VSELS because of the possibility of contamination by small CD45-negative erythroblasts.

Unfortunately, the second group [33] also did not avoid several major technical mistakes that could result both in VSEL loss/exclusion and dilution with extraneous objects. The reason for this was (i) expanding the gating for VSEL isolation to include extraneous objects (including Lin^{dim} and CD45^{dim} cells), resulting in VSEL dilution and enrichment in erythroblasts and (ii) relying on inexact Syto-16 staining as the main indicator of “VSEL candidates,” which, in fact, are an incorrect, non-VSEL fraction [33]. Together, these approaches led to both VSEL dilution and loss and had a critical effect on the subsequent gene expression and functional analysis of these cells.

In contrast to murine VSELS, phenotypically corresponding human VSELS are isolated as a population of small CD133⁺Lin⁻CD45⁻ cells. We reported that expression of CD133 antigen is, so far, the most important positive marker of human early-development VSELS [49]. However, human VSELS may also co-express CXCR4, CD34, and SSEA-4, the rarest population of CD133⁺Lin⁻CD45⁻ cells is highly enriched for small Oct-4⁺ VSELS [8]. If a sorted population of human cells does not express CD133, it cannot be considered to be enriched for VSELS [31]. This can be observed in one report where [31] an FACS-sorted population of CXCR4⁺Lin⁻CD45⁻ cells that lacked expression of CD133 was mistakenly identified as UCB-derived VSELS [31]. Furthermore, this group not only replaced a reliable anti-CD133 antibody clone with one that is less effective for CD133 detection, but, in addition, “proved” the absence of a CD133⁺Lin⁻CD45⁻ population of VSELS in UCB by employing histograms in their paper instead of dot plots [31]. It is well known that since VSELS are very rare, dot plot analysis is required to show the presence of these cells.

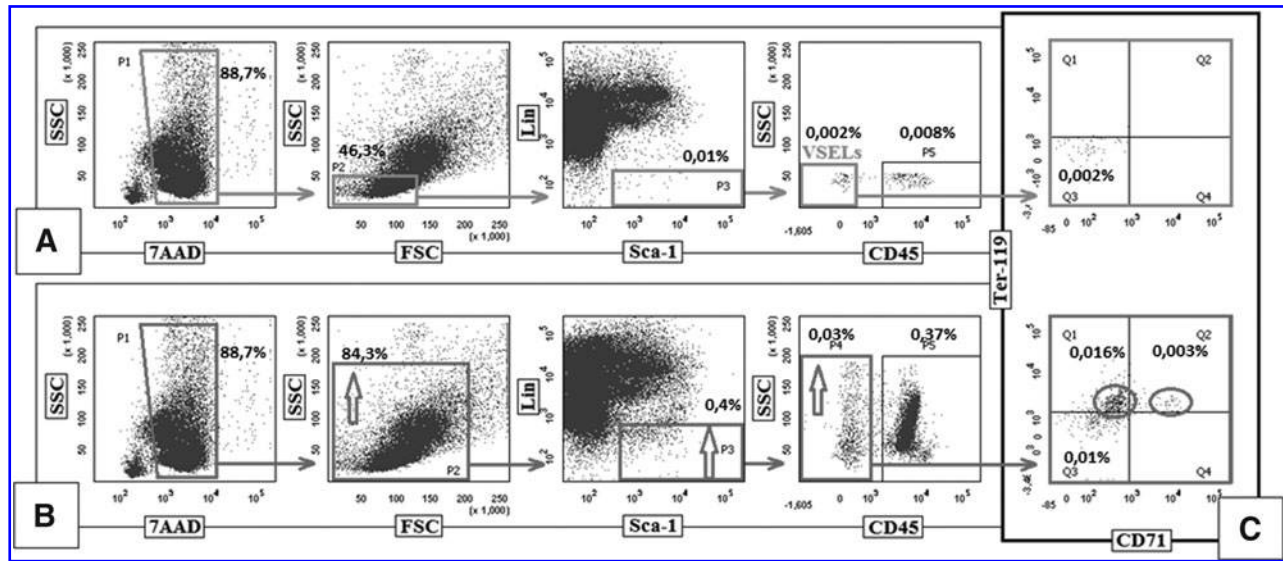


FIG. 1. Comparison of a correct and incorrect gating strategy for murine BM very small embryonic-like stem cells (VSELs). (A) The correct gating strategy to analyze or sort murine BM-derived VSELs by FACS. Cells were fixed and stained with 7AAD to show nucleated events in gate P1. Gate P2 includes small, agranular cells. Gate P3 includes Sca-1⁺ Lin⁻ cells, which are visualized on the next dot plot as CD45-negative (VSELs) and CD45-positive cells (HSCs). Expanding this gate into lineage^{dim} population will result in contamination of VSELs by erythroblasts. Percentage shows the average content of each cellular subpopulation among total BM nucleated cells after fixation procedure and staining with 7ADD to gate for nucleated cells only. (B) An incorrect gating strategy (we followed the sorting procedure employed by Szade et al. [32]). As shown, this group employed extended regions P2, P3, and P4, (indicated by arrows) which resulted in enrichment of erythroblasts. (C) Expression of erythroblastic markers: CD71 and Ter-119 (markers of early-stage and more differentiated erythroblasts) in cells sorted by employing correct (A) and incorrect (B) sorting strategies. Cells enclosed by circles in the lower dot plot indicate an erythroblast population that contaminates the VSELs, which is not observed in cells sorted by the correct strategy (upper dot plot).

Figure 2 demonstrates an example of the analysis of UCB-derived CD133⁺lin⁻CD45⁻ cells by histogram as was performed by this group [31] versus a dot plot, as they should be presented. Thus, based on histogram data, this group [31] isolated an incorrect population of cells for further analysis, and what is even more interesting, failed to realize that, in fact, on the original histogram curves in their paper, small “teeth” corresponding to rare VSELs are visible, and not displaying their data in a dot plot [31].

VSELs Express Several PSCs Markers and Exhibit the In Vitro Criteria of PSCs But Do Not Complete Blastocyst Development and Do Not Grow Teratomas

Several stringent in vitro and in vivo criteria for defining stem cells as PSCs have been proposed by embryologists who are working with embryonic stem cells (ESCs) isolated from embryos or induced PSCs (iPSCs), and we reviewed these criteria in our recent publications [50,51].

In brief, recent experimental data showed that murine BM VSELs fulfill all the in vitro criteria expected for PSCs. Specifically, they possess the primitive morphology of early-development cells (high nuclear/cytoplasmic ration, the presence of euchromatin in nuclei, and a few mitochondria) and express markers typical of PSCs (eg, *Oct-4*, *Nanog*, and *Rex-1*). More importantly, we recently demonstrated the presence of an open-type chromatin in the *Oct-4* promoter in murine BM VSELs. Specifically, molecular analysis revealed its hypomethylation and association with

transcription-permissive histones (indicated by a high H3Ac/H3K9me2 ratio) [24]. Moreover, the promoter of another core transcription factor, *Nanog*, despite having a higher level of methylation in VSELs (~50%) than the *Oct-4* promoter, is also transcriptionally active and has a high H3Ac/H3K9me2 ratio that favors transcription [24]. Based on these results, we conclude that murine VSELs truly express both *Oct-4* and *Nanog* [24]. With regard to the other in vitro criteria of pluripotency, murine VSELs also possess bivalent domains in promoters that encode developmentally important homeobox-containing transcription factors, such as *Sox21*, *Nkx2.2*, *Dlx1*, *Lbx1h*, *Hlx9*, *Pax5*, and *HoxA3* [26]. Furthermore, VSELs derived from female mice reactivate the X-chromosome [51]. Finally, we and other groups have succeeded in differentiating VSELs in vitro into cells of all three germ layers [4,36,39,40,42,52].

Nevertheless, in contrast to pluripotent ESCs and iPSCs, murine VSELs do not complete blastocyst development and do not grow teratomas in immunodeficient mice [24,50]. This discrepancy between in vitro and in vivo pluripotency criteria can be explained by epigenetic changes in the expression of some paternally imprinted genes [24] that govern quiescence of these rare cells. Specifically, VSELs, similar to primordial germ cells (PGCs), erase imprinting in regulatory regions for paternally imprinted genes at the *Igf2-H19* and *RasGRF1* loci and increase imprinting at some regulatory regions for maternally imprinted genes such as *Igf2R* and *KCNQ1*. Thus, murine BM VSELs, by epigenetic modulation of imprinted genes (*Igf2-H19*, *RasGRF1*, and *IGF2R*) that play an important a role in IIS, remain resistant

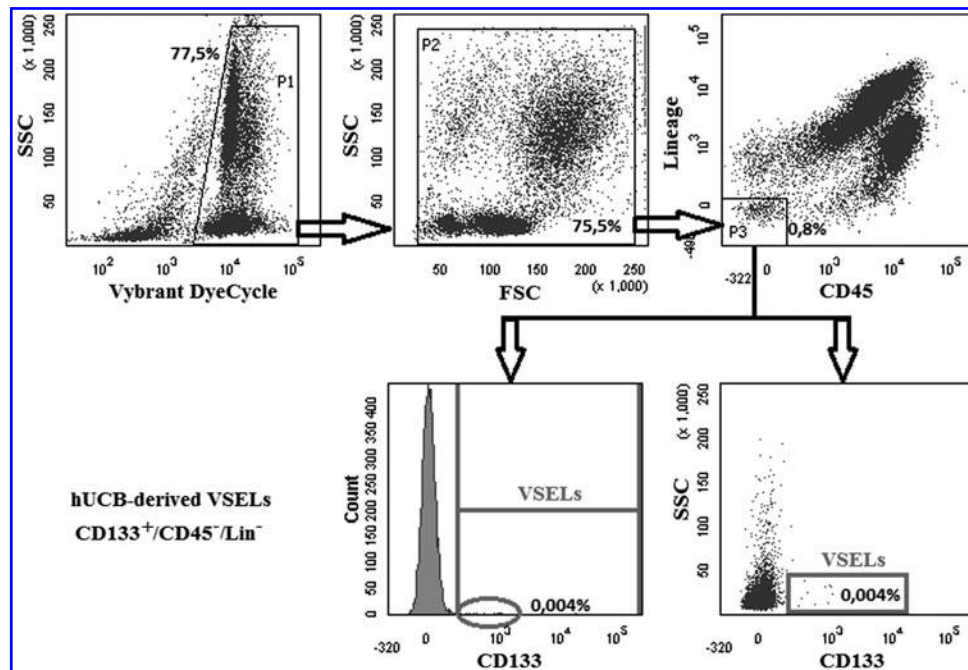


FIG. 2. FACS analysis of umbilical cord blood (UCB) $CD133^+Lin^-CD45^-$ VSELS. UCB VSELS are very rare cells, and their content varies, sometimes significantly, between UCB units. *Upper panel*–P1–shows DNA positive events shown in P2 as SSC versus FSC dot plot. P3–includes Lin^-CD45^- cells. These human UCB Lin^-CD45^- cells were subsequently evaluated by FACS for the expression of CD133 antigen. The *lower left panel* illustrates an analysis for the presence of $CD133^+$ cells in cells from P1/P2/P3 by employing a histogram, and the *right panel* is a visualization of these rare cells by dot plot. Danova-Alt et al. [31], in their recent studies, concluded that $CD133^+CD45^-Lin^-$ cells as well as $CD34^+CD45^-Lin^-$ cells do not exist in UCB. In fact, one of the reasons that these rare stem cell populations were overlooked by Danova-Alt and colleagues is they employed histograms instead of dot plot cytograms [31].

to stimulation by insulin, IGF-1, and IGF-2 and to additional modulation of expression of the *KCNQ1* locus, which regulates expression of the cell cycle inhibitor *p57Kip2*. As a result of this resistance, VSELS remain in adult tissues as a population of highly quiescent cells [24], and, therefore, these epigenetic changes explain their lack of ex vivo expansion.

Considering the in vivo criteria of stem cell pluripotentiality, one has to consider that while all these in vivo criteria apply very well to ESCs and iPSCs [53,54], they are not always applicable for other pluripotent stem cells such as epiblast stem cells (EpiSCs) [55–58] or PGCs [59–61]. In particular, PGCs, by changes in expression of imprinted genes, remain quiescent, do not proliferate, do not complement blastocyst development, and do not form teratomas [62–65]. However, they may be converted by appropriate manipulation to embryonic germ cells (EGCs), but this requires appropriate changes in the expression of the imprinted genes mentioned earlier [24,66]. This well-known fact has also important practical implications. As previously reported, since murine BM VSELS express several markers of migrating PGCs and undergo similar (but not identical) epigenetic changes as PGCs in the expression of imprinted genes [24], it might be possible by manipulating the expression of imprinted genes to reprogram them to a proliferation-permissive state and expand them ex vivo for therapeutic purposes. This is one of the current challenges in our laboratory.

In Table 1, we have summarized the most important characteristics of murine and human VSELS.

Why “Small Embryonic-Like” Stem Cells?

The name “embryonic” has been proposed historically, based initially on the morphology of these cells and transmission electron microscope images that revealed a similar chromatin structure as the chromatin in ESCs [3,67]. Furthermore, molecular analysis of gene expression performed later revealed that VSELS express not only Oct-4, Nanog, and Rex-1 but, in addition, also several markers characteristic of EpiSCs and epiblast-derived migratory PGCs [23,28]. We are aware that the name “embryonic-like” may create some confusion, in particular, when size and morphology of VSELS are compared with that of established immortalized ESC lines. However, one should take into consideration that stem cells in the preimplantation blastocyst or epiblast are very small and, in addition, we have to consider that quiescent cells residing in adult tissues have reduced cytoplasm and a high nuclear/cytoplasmic ratio.

In fact, several investigators have described populations of very small stem cells in adult murine [15,34–37,45,68], and most likely, some of these cell populations that possess broader differentiation potential across germ layers could be related to the VSELS (Table 2).

The Biological Function of VSELS in BM and Other Adult Tissues

We and others postulate that in BM, VSELS are a dormant population of stem cells which serve as precursors for long-term repopulating HSCs (LT-HSCs) [50,69,70] and MSCs

TABLE 1. THE MOST IMPORTANT IDENTIFICATION CRITERIA THAT ARE ATTRIBUTABLE TO BM-PURIFIED MURINE VSELS AND HUMAN UCB-ISOLATED VSELS

Source of VSELS	Characteristics
Murine VSELS ^a	<p>Enriched in population of cells that are slightly smaller than red blood cells.</p> <p>Primitive morphology, large nuclei contain euchromatin, high nuclear/cytoplasmic ratio. Quiescent cells due to epigenetic changes in expression of some genes regulated by paternal imprinting (eg, Igf2-H19, RasGrf1, IGF2R, and p57Kip2). It also explains that they neither form teratomas nor complement blastocyst development.</p> <p>Purified VSELS are enriched for cells that express some markers characteristic for pluripotent stem cells (Oct-4, Nanog, SSEA-1, and presence of bivalent domains), epiblast and germ line cell markers.</p> <p>Number of VSELS decreases with the age and correlates with life span in experimental animals.</p> <p>In appropriate experimental models murine VSELS differentiate into cells from all three germ layers, including germ line.</p> <p>Highly resistant to stress, irradiation and cytostatics.</p>
Human VSELS ^b	<p>Enriched in a population of cells that are slightly smaller than red blood cells.</p> <p>Primitive morphology, large nuclei contain euchromatin, high nuclear/cytoplasmic ratio. Purified human UCB-VSELS are enriched for cells that express some markers characteristic for pluripotent stem cells (eg, Oct-4, Nanog, and SSEA-4) and some epiblast and primordial germ cell markers.</p> <p>Do not form teratomas in experimental animals</p> <p>Quiescent cells due to epigenetic changes in expression of some genes regulated by paternal imprinting (eg, Igf2-H19).</p> <p>In appropriate experimental models, human VSELS differentiate into hematopoietic cells, mesenchymal stem cells, and neural cells. Moreover, VSELS isolated from human gonads also differentiate into germ line cells.</p>

^aThe best characterized so far at molecular level are murine VSELS purified from BM. More work is needed to compare VSELS isolated from other tissues with BM-purified ones.

^bRecent data reported on VSELS-like cells isolated from human ovaries indicate their molecular similarity to murine BM-purified VSELS [14,15,18,68,117,118].

VSEL, very small embryonic-like stem cells; UCB, umbilical cord blood; BM, bone marrow.

[40,41]. By contrast, VSELS residing in the gonads give rise to gametes [15,68,71]. However, more studies are required to see whether VSELS in other organs play a similar role as precursors for monopotent TCSCs. Evidence has accumulated that VSELS are activated and mobilized into PB during tissue or organ injuries in murine and human models of heart infarct [10,44,72], stroke [11], skin burns [13], colitis ulcerosa [12], and tumor expansion [46] and in several of these pathologic situations, the number of VSELS circulating in peripheral blood may be of some prognostic value.

TABLE 2. EXAMPLES OF SELECTED REPORTS FROM OTHER INDEPENDENT GROUPS ON SMALL STEM CELLS THAT ARE ATTRIBUTABLE TO VSELS

Cells name as originally described in the literature	References
<i>ELH cells</i> —Very small cells ~5 μm in diameter isolated by elutriation and FACS sorting or by elutriation (E), lineage depletion (L), and recovered after homing (H) to BM. Give rise to long-term reconstituting hematopoietic cells (LT-HSCs) and epithelial cells.	[34,35,119]
<i>Small nonhematopoietic Sca-1⁺ Lin⁻ CD45⁻ cells</i> —Isolated by FACS from murine BM give rise to type II pneumocytes, producing surfactant in lung alveolar epithelium. Recently, these cells have been confirmed to be VSELS.	[39,52]
<i>Pluripotent CD45⁻ Sca-1⁺ c-kit⁻ cells</i> —Isolated by FACS from murine BM, muscles, and intestinal epithelium that are able to differentiate into cells from all three germ layers.	[36]
<i>Spore-like stem-cells</i> —Very small cells, ~5 μm in diameter, isolated from various murine tissues, resistant to freeze/thawing, expressing Oct-4, and showing broad differentiation. The isolation procedure of these small cells not revealed in original paper.	[37]
<i>Rat embryonic-like stem cells (ELSCs)</i> —Very small cells, ~5 μm in diameter, isolated by FACS from rat bone marrow as SSEA-1 ⁺ Lin ⁻ CD45 ⁻ population. These cells as reported express Oct-4 and are endowed with in vitro and in vivo cardiomyogenic and endothelial potential.	[45]
<i>Ovarian and testicular VSELS</i> —Small Oct-4 ⁺ SSEA ⁺ cells isolated by FACS from ovarian surface epithelium (OSE) from mice (SSEA-1 ⁺) and humans (SSEA-4 ⁺)—precursors of female gametes. Human OSE-derived VSELS were characterized extensively by gene array for mRNA expression. Small Oct-4 ⁺ SSEA ⁺ cells were also identified in murine and human testes as precursors of male gametes.	[14,15,18,68,117]
<i>Embryonic-like stem-cells from UCB</i> —Small CD45 ⁻ , CD33 ⁻ , CD7 ⁻ , CD235a ⁻ pluripotent stem-cells (~3 μm in diameter) co-expressing embryonic stem-cell markers, including Oct-4 and Sox2, and able to differentiate into neuronal cells.	[5,6]
<i>Human UCB-derived VSELS</i> —Small Oct-4 ⁺ , SSEA-4 ⁺ , Nanog ⁺ , Sox2 ⁺ , Rex-1 ⁺ , and Tert ⁺ cells.	[7,20]

(continued)

TABLE 2. (CONTINUED)

<i>Cells name as originally described in the literature</i>	<i>References</i>
<i>Human PB-derived VSELS</i> —Oct-4 ⁺ very small cells isolated by FACS. In one of the reports SSEA-4 ⁺ CD133 ⁺ CXCR4 ⁺ Lin ⁻ and CD45 ⁻ VSELS from human PB formed in immunodeficient mice vascularized bone fragments.	[9,41]
<i>Omnicytes</i> —Small Oct-4 ⁺ stem-cells identified in UCB, able to establish fetal-maternal chimerism.	[38]
<i>UCB-derived nonhematopoietic CD34⁻ Oct-3/4⁺, Sox2⁺, Rex-1⁺ cells</i> —that are able to differentiate into neural lineage (neurons, astrocytes, oligodendrocytes).	[120]

The number of VSELS in adult murine tissues reportedly decreases with age [73–75], and the number of these cells also correlates with lifespan in mice. Mice that live longer (eg, Laron and Ames dwarfs) maintain higher numbers of these cells in BM [73]. Preliminary not published data also indicate a positive effect of physical activity and calorie restriction in maintaining a high number of VSELS in adult murine tissues.

Based on this evidence, VSELS could be a back-up population of dormant stem cells in adult tissues that plays, on the one hand, an important role in organ regeneration during tissue injuries, and on the other hand, is involved in rejuvenation of the tissues. Since the number of these cells decreases with the age [73–75], this could help explain both the impaired regeneration and tissue rejuvenation observed in older individuals.

What Is the Rationale for Why PSCs/MPSCs Reside in Adult Tissues?

A decade ago, the concept of stem cell plasticity was proposed, based on the assumption that adult monopotent TCSCs (eg, HSCs) may trans-differentiate into cells from other germ layers (eg, neural cells) [76–80]. This concept is currently rejected by a majority of the scientific community, and alternative explanations for the “phenomenon of stem cell plasticity” have been proposed, such as cell fusion [81–83] or the presence of heterogeneous populations of stem cells, for example, in BM, UCB, or mPB, including some rare stem cells endowed with broader differentiation potential [1,5,6,36,47,84,85]. Moreover, in parallel, cumulative evidence from several laboratories shows that in the adult tissues may reside cells which express some early development embryonic markers [5,6,30,86–95], and some of these cells may even possess germ line potential [96–103]. Some of these intriguing cells are listed in Table 3. It is important to emphasize that murine BM-purified VSELS are enriched as mentioned earlier in cells which express several markers characteristic for migrating GPCs [23].

In support of the presence of early development stem cells in postnatal life, several types of putative PSCs or MPSCs have been described and isolated, primarily from hematopoietic tissues and that are able to give rise to cells from

TABLE 3. SELECTED REPORTS FROM OTHER GROUPS ON STEM CELLS IN ADULT NONGONADAL TISSUES THAT POSSESS GERM LINE POTENTIAL AND/OR EXPRESS EMBRYONIC STEM CELL MARKERS (EG, OCT-4, SSEA, AND MVH)

<i>Cells name as originally described in the literature</i>	<i>References</i>
<i>Stem cells with germ line potential from newborn mouse skin</i> —Oct-4 ⁺ cells isolated by FACS from Oct-4-GFP mice that are able to give rise in vitro and in vivo to early oocytes.	[96]
<i>Porcine multipotent stem/stromal cells</i> —Oct-3/4 ⁺ , Nanog ⁺ , Sox2 ⁺ cells isolated from porcine skin and adipose tissue able to differentiate into oocyte like cells.	[97]
<i>SSEA-1⁺ murine BM cells</i> —Isolated from murine BM by anti-SSEA-1 immunomagnetic beads. In the presence of BMP4 (bone morphogenic factor-4), they differentiate into Oct-4 ⁺ Stella ⁺ Mvh ⁺ and into gamete precursors.	[98]
<i>BM-derived putative germ cells</i> —Oct-4 + Mvh + Dazl + Stella + cells present in BM that may affect recurrence of oogenesis in mice sterilized by chemotherapy.	[99,100]
<i>BM-derived male germ cells</i> —Oct-4 ⁺ , Mvh ⁺ , Stella ⁺ cells isolated as Stra8-GFP cells from BM from Stra8-GFP transgenic mice. These cells express several molecular markers of spermatogonial stem cells and spermatogonia.	[101]
<i>BM-derived precursors of male germ cells</i> —GFP ⁺ transgenic chicken Oct-4 ⁺ SSEA-1/3/4 ⁺ BM cells after injection into testes give rise to functional sperm.	[102]

more than one germ layer [36,87,104–109]. These cells were isolated by employing various strategies, such as ex vivo expansion of partially purified immunomagnetic- or FACS-based sorted cells [35,36,39,45,87,104,107,108]. Nevertheless, in most of the expansion cultures, those rare cells that were able to initiate expansions and cross germ-layer commitment were not characterized at the single-cell level [78,87,105,106,108], and in most of these cases, the phenotype of the putative stem cell with PSC/MPSC properties was described “post factum,” after phenotyping clones of already differentiated, in vitro-expanded cells [87,104,108,110]. Nevertheless, many of the investigators would agree that if early-development stem cells endowed with broader differentiation potential reside in adult tissues, they are probably closely related and exist at different levels of tissue specification. Most likely, they represent overlapping populations of early-development stem cells that, depending on isolation strategy, ex vivo expansion protocol, and markers employed for their identification, have been given different names [87,104,105,107,108,110–112]. Figure 3 shows a hypothetical relationship to other populations of multi/pluripotent stem cells described in adult BM, PB, and UCB such as, for example, Multipotent Adult Stem Cells (MASC) [104], Multilineage-differentiating stress-enduring cells (Muse) [110,111], MSCs [112], Multipotent Adult Progenitor Cells [106], Unrestricted Somatic Stem Cells [107], Marrow-

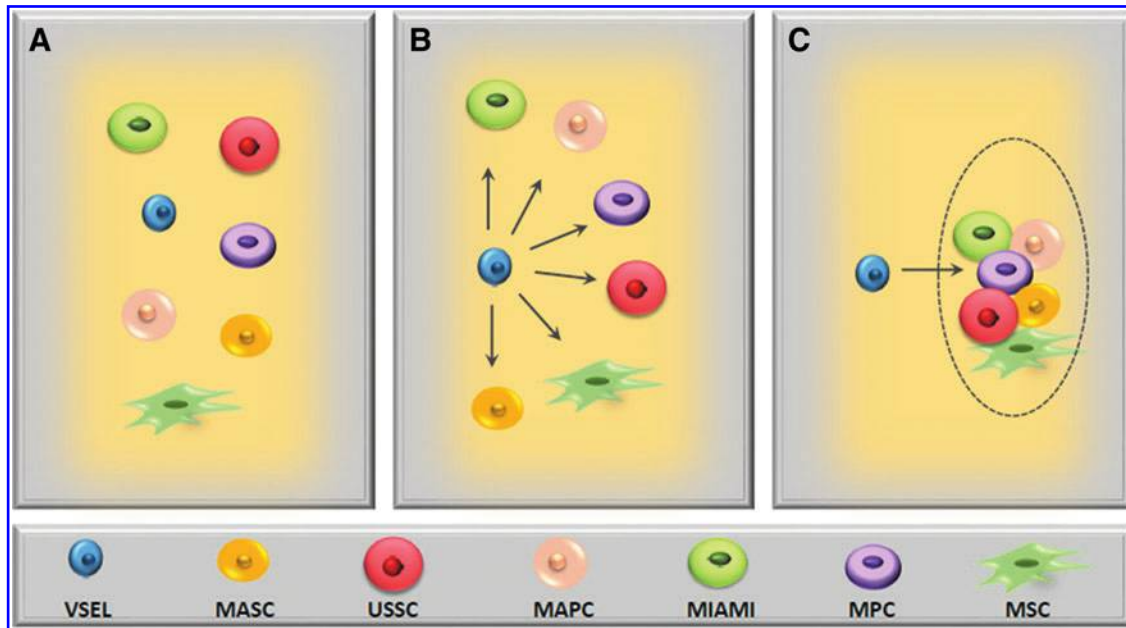


FIG. 3. Hypothetical relation of VSEs to other multi/pluripotent stem cells identified in adult bone marrow (BM), peripheral blood (PB), and UCB. (A) VSEs and other multi/pluripotent stem cells identified in hematopoietic tissues are independent populations of stem cells. (B) VSEs are the most primitive small dormant stem cells that on proper activation give rise to expanding other larger multi/pluripotent stem cells. (C) VSEs are the most primitive small dormant stem cells that on proper activation give rise to other larger multi/pluripotent overlapping stem cell populations. We hypothesize that it is the most likely scenario.

Isolated Adult Multilineage-Inducible Cells [108], and Multipotent Progenitor Cells [87,104].

Overall, the presence of PSCs/MPSCs in adult tissues can be explained by the possibility that early, during embryogenesis, not all of the earliest-development stem cells disappear from the embryo after giving rise to TCSCs, but some may survive in developing organs as “a dormant backup population of more primitive stem cells” [113]. These cells could give rise to monopotent TCSCs and, thus, be involved in tissue/organ rejuvenation and in organ regeneration after organ injury. In support of this notion, evidence has accumulated that adult murine tissues, in fact, contain, in addition to rapidly proliferating stem cells, a backup population of more primitive dormant stem cells [3,4]. We have proposed as mentioned earlier that these most-primitive dormant stem cells are kept quiescent in adult tissues by changes in the expression of imprinted genes which mostly regulate insulin/insulin like growth factor-1 and -2 signaling (IIS) [24,66]. Interestingly, our proposal that the most-primitive stem cells in adult tissues which give rise to BM LT-HSCs [42,47] follow this mechanism has been recently somehow confirmed by another group [114]. Thus, we envision that VSEs, or stem cells very closely related to them, could fulfill the criteria for such dormant stem cells in adult tissues [113]. This, however, requires further experimental evidence, in particular for the most-primitive stem cells residing in other extra-hematopoietic tissues.

Future Directions

Despite significant progress in the field, there are still many problems with VSEs that should be solved. First, most of the data has been generated so far in murine

BM-derived VSEs. We do not know whether phenotypically similar VSEs residing in other murine organs are regulated in the same way. Second, we are aware that we may be purifying a collection of small cells which are at different levels of tissue specification and development. Third, we also do not know whether human VSEs have a same molecular signature as their murine counterparts. Finally, as mentioned earlier, expansion *in vitro* is still a problem for both murine and human VSEs. We believe that the most important reason for these obvious obstacles is epigenetic modification of some imprinted genes in these cells [24] and unfortunately, our *in vitro* models which we applied so far did not provide optimal signals and microenvironment to reverse this phenomenon. Therefore, we need to explore the possibility that modification of imprinted genes in VSEs, as reported for PGCs [62–64], could help expand these cells. Another strategy would be to find a proper scaffold or supportive microenvironment that will force expansion and differentiation of VSEs, similarly as has been recently reported for other types of stem cells [115,116].

We expect that the next few years will bring answers about the developmental origin and biological role of this distinct and intriguing population of stem cells residing in adult tissues. We should also seriously consider a new hierarchy for the stem cell compartment not only in adult BM but also in other tissues and try to investigate the mutual relationship between VSEs and PSCs and MPSCs described by different investigators in adult organs [5,15,35,36,41,85,88,109].

Finally, we ask the scientific community to follow our well-described isolation protocols [19] and directly contact our group if there are problems with gating and sorting of these very rare cells. This will avoid confusion in the field

and situations in which cells are identified as VSELS but lack a true VSEL phenotype [31–33]. While this paper was prepared for print two recent reports confirmed presence of VSELS in adult human and murine tissues [121, 122].

Acknowledgments

This study was supported by UE structural funds, the Innovative Economy Operational Program POIG.01.01.02-00-109/09 grant, NIH grants 2R01 DK074720 and R01HL112788, and the Stella and Henry Endowment to MZR.

Author Disclosure Statement

The University of Louisville is the owner of patents on VSELS and some areas of VSEL technology are licensed to Neostem, Inc., New York. None of the authors have any stock in Neostem or any other biotechnological stem cell company.

References

- Kucia M, R Reza, FR Campbell, E Zuba-Surma, M Majka, J Ratajczak and MZ Ratajczak. (2006). A population of very small embryonic-like (VSEL) CXCR4(+) SSEA-1(+)Oct-4+ stem cells identified in adult bone marrow. *Leukemia* 20:857–869.
- Kucia M, W Wu and MZ Ratajczak. (2007). Bone marrow-derived very small embryonic-like stem cells: their developmental origin and biological significance. *Dev Dyn* 236:3309–3320.
- Kucia M, M Wysoczynski, J Ratajczak and MZ Ratajczak. (2008). Identification of very small embryonic like (VSEL) stem cells in bone marrow. *Cell Tissue Res* 331: 125–134.
- Zuba-Surma EK, M Kucia, W Wu, I Klich, JW Lillard, Jr., J Ratajczak and MZ Ratajczak. (2008). Very small embryonic-like stem cells are present in adult murine organs: ImageStream-based morphological analysis and distribution studies. *Cytometry A* 73A:1116–1127.
- McGuckin CP, N Forraz, MO Baradez, S Navran, J Zhao, R Urban, R Tilton and L Denner. (2005). Production of stem cells with embryonic characteristics from human umbilical cord blood. *Cell Prolif* 38:245–255.
- McGuckin C, M Jurga, H Ali, M Strbad and N Forraz. (2008). Culture of embryonic-like stem cells from human umbilical cord blood and onward differentiation to neural cells *in vitro*. *Nat Protoc* 3:1046–1055.
- Bhartiya D, A Shaikh, P Nagvenkar, S Kasiviswanathan, P Pethe, H Pawani, S Mohanty, SG Rao, K Zaveri and I Hinduja. (2012). Very small embryonic-like stem cells with maximum regenerative potential get discarded during cord blood banking and bone marrow processing for autologous stem cell therapy. *Stem Cells Dev* 21:1–6.
- Kucia M, M Halasa, M Wysoczynski, M Baskiewicz-Masiuk, S Moldenhawer, E Zuba-Surma, R Czajka, W Wojakowski, B Machalinski and MZ Ratajczak. (2007). Morphological and molecular characterization of novel population of CXCR4+ SSEA-4+ Oct-4+ very small embryonic-like cells purified from human cord blood: preliminary report. *Leukemia* 21:297–303.
- Sovalat H, M Scrofani, A Eidenschenk, S Pasquet, V Rimelen and P Henon. (2011). Identification and isolation from either adult human bone marrow or G-CSF-mobilized peripheral blood of CD34(+)/CD133(+)/CXCR4(+)/Lin(-)CD45(-) cells, featuring morphological, molecular, and phenotypic characteristics of very small embryonic-like (VSEL) stem cells. *Exp Hematol* 39:495–505.
- Wojakowski W, M Tendera, M Kucia, E Zuba-Surma, E Paczkowska, J Ciosek, M Halasa, M Krol, M Kazmierski, et al. (2009). Mobilization of bone marrow-derived Oct-4+ SSEA-4+ very small embryonic-like stem cells in patients with acute myocardial infarction. *J Am Coll Cardiol* 53:1–9.
- Paczkowska E, M Kucia, D Koziarska, M Halasa, K Safranow, M Masiuk, A Karbicka, M Nowik, P Nowacki, MZ Ratajczak and B Machalinski. (2009). Clinical evidence that very small embryonic-like stem cells are mobilized into peripheral blood in patients after stroke. *Stroke* 40:1237–1244.
- Marlicz W, E Zuba-Surma, M Kucia, W Blogowski, T Starzynska and MZ Ratajczak. (2012). Various types of stem cells, including a population of very small embryonic-like stem cells, are mobilized into peripheral blood in patients with Crohn's disease. *Inflamm Bowel Dis* 18:1711–1722.
- Drukala J, E Paczkowska, M Kucia, E Mlynska, A Krajewski, B Machalinski, Z Madeja and MZ Ratajczak. (2012). Stem cells, including a population of very small embryonic-like stem cells, are mobilized into peripheral blood in patients after skin burn injury. *Stem Cell Rev* 8:184–194.
- Virant-Klun I, N Zech, P Rozman, A Vogler, B Cvjeticanin, P Klemenc, E Malicev and H Meden-Vrtovec. (2008). Putative stem cells with an embryonic character isolated from the ovarian surface epithelium of women with no naturally present follicles and oocytes. *Differentiation* 76:843–856.
- Parte S, D Bhartiya, J Telang, V Daithankar, V Salvi, K Zaveri and I Hinduja. (2011). Detection, characterization, and spontaneous differentiation *in vitro* of very small embryonic-like putative stem cells in adult mammalian ovary. *Stem Cells Dev* 20:1451–1464.
- Ratajczak J, M Kucia, K Mierzejewska, W Marlicz, Z Pietrzakowski, W Wojakowski, NJ Greco, M Tendera and MZ Ratajczak. (2013). Paracrine proangiopoietic effects of human umbilical cord blood-derived purified CD133+ cells—implications for stem cell therapies in regenerative medicine. *Stem Cells Dev* 22:422–430.
- Zuba-Surma EK, I Klich, N Greco, MJ Laughlin, J Ratajczak and MZ Ratajczak. (2010). Optimization of isolation and further characterization of umbilical cord blood-derived very small embryonic/epiblast-like stem cells (VSELS). *Eur J Haematol* 84:34–46.
- Virant-Klun I, T Skutella, M Hren, K Gruden, B Cvjeticanin, A Vogler and J Sinkovec. (2013). Isolation of small SSEA-4-positive putative stem cells from the ovarian surface epithelium of adult human ovaries by two different methods. *Biomed Res Int* 2013:690415.
- Zuba-Surma EK and MZ Ratajczak. (2010). Overview of very small embryonic-like stem cells (VSELS) and methodology of their identification and isolation by flow cytometric methods. *Curr Protoc Cytom Chapter 9: Unit9 29*.
- Halasa M, M Baskiewicz-Masiuk, E Dabkowska and B Machalinski. (2008). An efficient two-step method to purify very small embryonic-like (VSEL) stem cells from

- umbilical cord blood (UCB). *Folia Histochem Cytobiol* 46:239–243.
21. Ratajczak MZ, E Zuba-Surma, W Wojakowski, M Suszynska, K Mierzejewska, R Liu, J Ratajczak, D Myung-Shin and M Kucia. (2013). Very Small Embryonic Like Stem Cells (VSELs) represent a real challenge in stem cell biology. Recent pros and cons in the midst of a lively debate. *Leukemia* [Epub ahead of print]; DOI:10.1038/leu.2013.255.
 22. Ratajczak MZ, M Kucia, J Ratajczak and EK Zuba-Surma. (2009). A multi-instrumental approach to identify and purify very small embryonic like stem cells (VSELs) from adult tissues. *Micron* 40:386–393.
 23. Shin DM, R Liu, I Klich, W Wu, J Ratajczak, M Kucia and MZ Ratajczak. (2010). Molecular signature of adult bone marrow-purified very small embryonic-like stem cells supports their developmental epiblast/germ line origin. *Leukemia* 24:1450–1461.
 24. Shin DM, EK Zuba-Surma, W Wu, J Ratajczak, M Wyszczynski, MZ Ratajczak and M Kucia. (2009). Novel epigenetic mechanisms that control pluripotency and quiescence of adult bone marrow-derived Oct4(+) very small embryonic-like stem cells. *Leukemia* 23:2042–2051.
 25. Mierzejewska K, J Heo, JW Kang, H Kang, J Ratajczak, MZ Ratajczak, M Kucia and DM Shin. (2013). Genome-wide analysis of murine bone marrow-derived very small embryonic-like stem cells reveals that mitogenic growth factor signaling pathways play a crucial role in the quiescence and ageing of these cells. *Int J Mol Med* 32:281–290.
 26. Shin DM, R Liu, W Wu, SJ Waigel, W Zacharias, MZ Ratajczak and M Kucia. (2012). Global gene expression analysis of very small embryonic-like stem cells reveals that the Ezh2-dependent bivalent domain mechanism contributes to their pluripotent state. *Stem Cells Dev* 21:1639–1652.
 27. Zuba-Surma EK and MZ Ratajczak. (2011). Analytical capabilities of the ImageStream cytometer. *Methods Cell Biol* 102:207–230.
 28. Shin DM, R Liu, I Klich, J Ratajczak, M Kucia and MZ Ratajczak. (2010). Molecular characterization of isolated from murine adult tissues very small embryonic/epiblast like stem cells (VSELs). *Mol Cells* 29:533–538.
 29. Virant-Klun I, T Skutella, M Kubista, A Vogler, J Sinkovec and H Meden-Vrtovec. (2013). Expression of pluripotency and oocyte-related genes in single putative stem cells from human adult ovarian surface epithelium cultured *in vitro* in the presence of follicular fluid. *Biomed Res Int* 2013:861460.
 30. Virant-Klun I, M Stimpfel, B Cvjeticanin, E Vrtacnik-Bokal and T Skutella. (2013). Small SSEA-4-positive cells from human ovarian cell cultures: related to embryonic stem cells and germinal lineage? *J Ovarian Res* 6:24.
 31. Danova-Alt R, A Heider, D Egger, M Cross and R Alt. (2012). Very small embryonic-like stem cells purified from umbilical cord blood lack stem cell characteristics. *PLoS One* 7:e34899.
 32. Szade K, K Bukowska-Strakova, WN Nowak, A Szade, N Kachamakova-Trojanowska, M Zukowska, A Jozkowicz and J Dulak. (2013). Murine bone marrow Lin(-)Sca(-)1(+)/CD45(-) very small embryonic-like (VSEL) cells are heterogeneous population lacking Oct-4A expression. *PLoS One* 8:e63329.
 33. Miyanishi M, Y Mori, J Seita, JY Chen, S Karten, CK Chan, H Nakauchi and IL Weissman. (2013). Do pluripotent stem cells exist in adult mice as very small embryonic stem cells? *Stem Cell Rep* 1:198–208.
 34. Krause DS, ND Theise, MI Collector, O Henegariu, S Hwang, R Gardner, S Neutzel and SJ Sharkis. (2001). Multi-organ, multi-lineage engraftment by a single bone marrow-derived stem cell. *Cell* 105:369–377.
 35. Jones RJ, MI Collector, JP Barber, MS Vala, MJ Fackler, WS May, CA Griffin, AL Hawkins, BA Zehnbaauer, et al. (1996). Characterization of mouse lymphohematopoietic stem cells lacking spleen colony-forming activity. *Blood* 88:487–491.
 36. Howell JC, WH Lee, P Morrison, J Zhong, MC Yoder and EF Srouf. (2003). Pluripotent stem cells identified in multiple murine tissues. *Ann NY Acad Sci* 996:158–173.
 37. Vacanti MP, A Roy, J Cortiella, L Bonassar and CA Vacanti. (2001). Identification and initial characterization of spore-like cells in adult mammals. *J Cell Biochem* 80:455–460.
 38. Mikhail MA, H M'Hamdi, J Welsh, N Levicar, SB Marley, JP Nicholls, NA Habib, LS Louis, NM Fisk and MY Gordon. (2008). High frequency of fetal cells within a primitive stem cell population in maternal blood. *Hum Reprod* 23:928–933.
 39. Kassmer SH, H Jin, PX Zhang, EM Bruscia, K Heydari, JH Lee, CF Kim and DS Krause. (2013). Very small embryonic-like stem cells from the murine bone marrow differentiate into epithelial cells of the lung. *Stem Cells*. [Epub ahead of print]; DOI: 10.1002/stem.1413.
 40. Taichman RS, Z Wang, Y Shiozawa, Y Jung, J Song, A Balduino, J Wang, LR Patel, AM Havens, et al. (2010). Prospective identification and skeletal localization of cells capable of multilineage differentiation *in vivo*. *Stem Cells Dev* 19:1557–1570.
 41. Havens AM, Y Shiozawa, Y Jung, H Sun, J Wang, S McGee, A Mishra, LS Taichman, T Danciu, et al. (2013). Human very small embryonic-like cells generate skeletal structures, *in vivo*. *Stem Cells Dev* 22:622–630.
 42. Ratajczak J, M Wyszczynski, E Zuba-Surma, W Wan, M Kucia, MC Yoder and MZ Ratajczak. (2011). Adult murine bone marrow-derived very small embryonic-like stem cells differentiate into the hematopoietic lineage after coculture over OP9 stromal cells. *Exp Hematol* 39:225–237.
 43. Dawn B, S Tiwari, MJ Kucia, EK Zuba-Surma, Y Guo, SK Sanganalmath, A Abdel-Latif, G Hunt, RJ Vincent, et al. (2008). Transplantation of bone marrow-derived very small embryonic-like stem cells attenuates left ventricular dysfunction and remodeling after myocardial infarction. *Stem Cells* 26:1646–1655.
 44. Zuba-Surma EK, Y Guo, H Taher, SK Sanganalmath, G Hunt, RJ Vincent, M Kucia, A Abdel-Latif, XL Tang, et al. (2011). Transplantation of expanded bone marrow-derived very small embryonic-like stem cells (VSEL-SCs) improves left ventricular function and remodeling after myocardial infarction. *J Cell Mol Med* 15:1319–1328.
 45. Wu JH, HJ Wang, YZ Tan and ZH Li. (2012). Characterization of rat very small embryonic-like stem cells and cardiac repair after cell transplantation for myocardial infarction. *Stem Cells Dev* 21:1367–1379.
 46. Jung Y, JK Kim, Y Shiozawa, J Wang, A Mishra, J Joseph, JE Berry, S McGee, E Lee, et al. (2013).

- Recruitment of mesenchymal stem cells into prostate tumours promotes metastasis. *Nat Commun* 4:1795.
47. Ratajczak J, E Zuba-Surma, I Klich, R Liu, M Wysocki, N Greco, M Kucia, MJ Laughlin and MZ Ratajczak. (2011). Hematopoietic differentiation of umbilical cord blood-derived very small embryonic/epiblast-like stem cells. *Leukemia* 25:1278–1285.
 48. Liu R, I Klich, J Ratajczak, MZ Ratajczak and EK Zuba-Surma. (2009). Erythrocyte-derived microvesicles may transfer phosphatidylserine to the surface of nucleated cells and falsely “mark” them as apoptotic. *Eur J Haematol* 83:220–229.
 49. Ratajczak MZ, K Mierzejewska, J Ratajczak and M Kucia. (2013). CD133 Expression strongly correlates with the phenotype of very small embryonic-/epiblast-like stem cells. *Adv Exp Med Biol* 777:125–141.
 50. Ratajczak MZ, DM Shin, R Liu, K Mierzejewska, J Ratajczak, M Kucia and EK Zuba-Surma. (2012). Very small embryonic/epiblast-like stem cells (VSELS) and their potential role in aging and organ rejuvenation—an update and comparison to other primitive small stem cells isolated from adult tissues. *Aging (Albany NY)* 4:235–246.
 51. Ratajczak MZ, R Liu, J Ratajczak, M Kucia and DM Shin. (2011). The role of pluripotent embryonic-like stem cells residing in adult tissues in regeneration and longevity. *Differentiation* 81:153–161.
 52. Kassmer SH, EM Bruscia, PX Zhang and DS Krause. (2012). Nonhematopoietic cells are the primary source of bone marrow-derived lung epithelial cells. *Stem Cells* 30:491–499.
 53. Muller FJ, J Goldmann, P Loser and JF Loring. (2010). A call to standardize teratoma assays used to define human pluripotent cell lines. *Cell Stem Cell* 6:412–414.
 54. Smith KP, MX Luong and GS Stein. (2009). Pluripotency: toward a gold standard for human ES and iPS cells. *J Cell Physiol* 220:21–29.
 55. Xue K, JH Ng and HH Ng. (2011). Mapping the networks for pluripotency. *Philos Trans R Soc Lond B Biol Sci* 366:2238–2246.
 56. Bernemann C, B Greber, K Ko, J Sternecker, DW Han, MJ Arauzo-Bravo and HR Scholer. (2011). Distinct developmental ground states of epiblast stem cell lines determine different pluripotency features. *Stem Cells* 29:1496–1503.
 57. Hayashi K and MA Surani. (2009). Self-renewing epiblast stem cells exhibit continual delineation of germ cells with epigenetic reprogramming *in vitro*. *Development* 136:3549–3556.
 58. Gillich A, S Bao, N Grabole, K Hayashi, MW Trotter, V Pasque, E Magnusdottir and MA Surani. (2012). Epiblast stem cell-based system reveals reprogramming synergy of germline factors. *Cell Stem Cell* 10:425–439.
 59. Leitch HG, J Nichols, P Humphreys, C Mulas, G Martello, C Lee, K Jones, MA Surani and A Smith. (2013). Rebuilding pluripotency from primordial germ cells. *Stem Cell Rep* 1:66–78.
 60. Ginsburg M, MH Snow and A McLaren. (1990). Primordial germ cells in the mouse embryo during gastrulation. *Development* 110:521–528.
 61. Eguizabal C, TC Shovlin, G Durcova-Hills, A Surani and A McLaren. (2009). Generation of primordial germ cells from pluripotent stem cells. *Differentiation* 78:116–123.
 62. Reik W and J Walter. (2001). Genomic imprinting: parental influence on the genome. *Nat Rev Genet* 2:21–32.
 63. Hayashi K and MA Surani. (2009). Resetting the epigenome beyond pluripotency in the germline. *Cell Stem Cell* 4:493–498.
 64. Wylie C. (1999). Germ cells. *Cell* 96:165–174.
 65. Hayashi K, SM de Sousa Lopes and MA Surani. (2007). Germ cell specification in mice. *Science* 316:394–396.
 66. Ratajczak MZ, DM Shin, G Schneider, J Ratajczak and M Kucia. (2013). Parental imprinting regulates insulin-like growth factor signaling: a Rosetta Stone for understanding the biology of pluripotent stem cells, aging and cancerogenesis. *Leukemia* 27:773–779.
 67. Melcer S and E Meshorer. (2010). Chromatin plasticity in pluripotent cells. *Essays Biochem* 20:245–262.
 68. Bhartiya D, S Kasiviswanathan and A Shaikh. (2012). Cellular origin of testis-derived pluripotent stem cells: a case for very small embryonic-like stem cells. *Stem Cells Dev* 21:670–674.
 69. Ratajczak MZ, M Suszyska, D Pedziwiatr, K Mierzejewska and NJ Greco. (2012). Umbilical cord blood-derived very small embryonic like stem cells (VSELS) as a source of pluripotent stem cells for regenerative medicine. *Pediatr Endocrinol Rev* 9:639–643.
 70. Ratajczak MZ, EK Zuba-Surma, B Machalinski, J Ratajczak and M Kucia. (2008). Very small embryonic-like (VSEL) stem cells: purification from adult organs, characterization, and biological significance. *Stem Cell Rev* 4:89–99.
 71. Sandhya A, D Bhartiya, K Sriraman, H Patel, D Manjramkar, G Bakshi, V Dhamankar and P Kurkure. (2013). Quiescent very small embryonic-like stem cells resist oncotherapy and can restore spermatogenesis in germ cell depleted mammalian testis. *Stem Cells Dev* [Epub ahead of print]; DOI:10.1089/scd.2013.0059.
 72. Kucia M, B Dawn, G Hunt, Y Guo, M Wysocki, M Majka, J Ratajczak, F Rezzoug, ST Ildstad, R Bolli and MZ Ratajczak. (2004). Cells expressing early cardiac markers reside in the bone marrow and are mobilized into the peripheral blood after myocardial infarction. *Circ Res* 95:1191–1199.
 73. Ratajczak J, DM Shin, W Wan, R Liu, MM Masternak, K Piotrowska, B Wiszniewska, M Kucia, A Bartke and MZ Ratajczak. (2011). Higher number of stem cells in the bone marrow of circulating low Igf-1 level Laron dwarf mice—novel view on Igf-1, stem cells and aging. *Leukemia* 25:729–733.
 74. Kucia M, DM Shin, R Liu, J Ratajczak, E Bryndza, MM Masternak, A Bartke and MZ Ratajczak. (2011). Reduced number of VSELS in the bone marrow of growth hormone transgenic mice indicates that chronically elevated Igf1 level accelerates age-dependent exhaustion of pluripotent stem cell pool: a novel view on aging. *Leukemia* 25:1370–1374.
 75. Kucia M, M Masternak, R Liu, DM Shin, J Ratajczak, K Mierzejewska, A Spong, JJ Kopchick, A Bartke and MZ Ratajczak. (2013). The negative effect of prolonged somatotrophic/insulin signaling on an adult bone marrow-residing population of pluripotent very small embryonic-like stem cells (VSELS). *Age (Dordr)* 35:315–330.
 76. Orlic D, J Kajstura, S Chimenti, DM Bodine, A Leri and P Anversa. (2003). Bone marrow stem cells regenerate infarcted myocardium. *Pediatr Transplant* 7 (Suppl. 3): 86–88.

77. Mezey E and KJ Chandross. (2000). Bone marrow: a possible alternative source of cells in the adult nervous system. *Eur J Pharmacol* 405:297–302.
78. Prockop DJ. (2003). Further proof of the plasticity of adult stem cells and their role in tissue repair. *J Cell Biol* 160:807–809.
79. Wagers AJ and IL Weissman. (2004). Plasticity of adult stem cells. *Cell* 116:639–648.
80. Mezey E, KJ Chandross, G Harta, RA Maki and SR McKercher. (2000). Turning blood into brain: cells bearing neuronal antigens generated *in vivo* from bone marrow. *Science* 290:1779–1782.
81. Vassilopoulos G and DW Russell. (2003). Cell fusion: an alternative to stem cell plasticity and its therapeutic implications. *Curr Opin Genet Dev* 13:480–485.
82. Scott EW. (2004). Stem cell plasticity or fusion: two approaches to targeted cell therapy. *Blood Cells Mol Dis* 32:65–67.
83. Eisenberg LM and CA Eisenberg. (2003). Stem cell plasticity, cell fusion, and transdifferentiation. *Birth Defects Res C Embryo Today* 69:209–218.
84. Ratajczak MZ, EK Zuba-Surma, W Wojakowski, J Ratajczak and M Kucia. (2008). Bone marrow—home of versatile stem cells. *Transfus Med Hemother* 35:248–259.
85. Kassmer SH and DS Krause. (2013). Very small embryonic-like cells: Biology and function of these potential endogenous pluripotent stem cells in adult tissues. *Mol Reprod Dev* 80:677–690.
86. Anjos-Afonso F and D Bonnet. (2007). Nonhematopoietic/endothelial SSEA-1+ cells define the most primitive progenitors in the adult murine bone marrow mesenchymal compartment. *Blood* 109:1298–1306.
87. Cesselli D, AP Beltrami, S Rigo, N Bergamin, F D’Aurizio, R Verardo, S Piazza, E Klaric, R Fanin, et al. (2009). Multipotent progenitor cells are present in human peripheral blood. *Circ Res* 104:1225–1234.
88. Kajstura J, M Rota, SR Hall, T Hosoda, D D’Amario, F Sanada, H Zheng, B Ogorek, C Rondon-Clavo, et al. (2011). Evidence for human lung stem cells. *N Engl J Med* 364:1795–1806.
89. Atari M, M Barajas, F Hernandez-Alfaro, C Gil, M Fabregat, E Ferrer Padro, L Giner and N Casals. (2011). Isolation of pluripotent stem cells from human third molar dental pulp. *Histol Histopathol* 26:1057–1070.
90. Wang X, H Ouyang, Y Yamamoto, PA Kumar, TS Wei, R Dagher, M Vincent, X Lu, AM Bellizzi, et al. (2011). Residual embryonic cells as precursors of a Barrett’s-like metaplasia. *Cell* 145:1023–1035.
91. d’Aquino R, V Tirino, V Desiderio, M Studer, GC De Angelis, L Laino, A De Rosa, D Di Nucci, S Martino, et al. (2011). Human neural crest-derived postnatal cells exhibit remarkable embryonic attributes either *in vitro* or *in vivo*. *Eur Cell Mater* 21:304–316.
92. Andreadis D, A Bakopoulou, G Leyhausen, A Epivatianos, J Volk, A Markopoulos and W Geurtsen. (2013). Minor salivary glands of the lips: a novel, easily accessible source of potential stem/progenitor cells. *Clin Oral Investig* [Epub ahead of print]; DOI:10.1007/s00784-013-1056-6.
93. Roy S, P Gascard, N Dumont, J Zhao, D Pan, S Petrie, M Margeta and TD Tlsty. (2013). Rare somatic cells from human breast tissue exhibit extensive lineage plasticity. *Proc Natl Acad Sci USA* 110:4598–4603.
94. Murrell W, E Palmero, J Bianco, B Stangeland, M Joel, L Paulson, B Thiede, Z Grieg, I Ramsnes, et al. (2013). Expansion of multipotent stem cells from the adult human brain. *PLoS One* 8:e71334.
95. Stimpfel M, T Skutella, B Cvjeticanin, M Meznaric, P Dovc, S Novakovic, P Cerkovnik, E Vrtacnik-Bokal and I Virant-Klun. (2013). Isolation, characterization and differentiation of cells expressing pluripotent/multipotent markers from adult human ovaries. *Cell Tissue Res* 354:593–607.
96. Dyce PW, J Liu, C Tayade, GM Kidder, DH Betts and J Li. (2011). *In vitro* and *in vivo* germ line potential of stem cells derived from newborn mouse skin. *PLoS One* 6:e20339.
97. Song SH, BM Kumar, EJ Kang, YM Lee, TH Kim, SA Ock, SL Lee, BG Jeon and GJ Rho. (2011). Characterization of porcine multipotent stem/stromal cells derived from skin, adipose, and ovarian tissues and their differentiation *in vitro* into putative oocyte-like cells. *Stem Cells Dev* 20:1359–1370.
98. Shirazi R, AH Zarnani, M Soleimani, MA Abdolvahabi, K Nayernia and I Ragerdi Kashani. (2012). BMP4 can generate primordial germ cells from bone-marrow-derived pluripotent stem cells. *Cell Biol Int* 36:1185–1193.
99. Johnson J, J Bagley, M Skaznik-Wikiel, HJ Lee, GB Adams, Y Niikura, KS Tschudy, JC Tilly, ML Cortes, et al. (2005). Oocyte generation in adult mammalian ovaries by putative germ cells in bone marrow and peripheral blood. *Cell* 122:303–315.
100. Selesniemi K, HJ Lee, T Niikura and JL Tilly. (2009). Young adult donor bone marrow infusions into female mice postpone age-related reproductive failure and improve offspring survival. *Aging (Albany NY)* 1:49–57.
101. Nayernia K, JH Lee, N Drusenheimer, J Nolte, G Wulf, R Dressel, J Gromoll and W Engel. (2006). Derivation of male germ cells from bone marrow stem cells. *Lab Invest* 86:654–663.
102. Heo YT, SH Lee, JH Yang, T Kim and HT Lee. (2011). Bone marrow cell-mediated production of transgenic chickens. *Lab Invest* 91:1229–1240.
103. Hua J, H Yu, W Dong, C Yang, Z Gao, A Lei, Y Sun, S Pan, Y Wu and Z Dou. (2009). Characterization of mesenchymal stem cells (MSCs) from human fetal lung: potential differentiation of germ cells. *Tissue Cell* 41:448–455.
104. Beltrami AP, D Cesselli, N Bergamin, P Marcon, S Rigo, E Puppato, F D’Aurizio, R Verardo, S Piazza, et al. (2007). Multipotent cells can be generated *in vitro* from several adult human organs (heart, liver, and bone marrow). *Blood* 110:3438–3446.
105. Jiang Y, BN Jahagirdar, RL Reinhardt, RE Schwartz, CD Keene, XR Ortiz-Gonzalez, M Reyes, T Lenvik, T Lund, et al. (2002). Pluripotency of mesenchymal stem cells derived from adult marrow. *Nature* 418:41–49.
106. Jiang Y, B Vaessen, T Lenvik, M Blackstad, M Reyes and CM Verfaillie. (2002). Multipotent progenitor cells can be isolated from postnatal murine bone marrow, muscle, and brain. *Exp Hematol* 30:896–904.
107. Kogler G, S Sensken, JA Airey, T Trapp, M Muschen, N Feldhahn, S Liedtke, RV Sorg, J Fischer, et al. (2004). A new human somatic stem cell from placental cord blood with intrinsic pluripotent differentiation potential. *J Exp Med* 200:123–135.
108. D’Ippolito G, S Diabira, GA Howard, P Menei, BA Roos and PC Schiller. (2004). Marrow-isolated adult multi-lineage inducible (MIAMI) cells, a unique population of

- postnatal young and old human cells with extensive expansion and differentiation potential. *J Cell Sci* 117:2971–2981.
109. Ratajczak MZ, E Zuba-Surma, M Kucia, A Poniewierska, M Suszynska and J Ratajczak. (2012). Pluripotent and multipotent stem cells in adult tissues. *Adv Med Sci* 57:1–17.
 110. Kuroda Y, S Wakao, M Kitada, T Murakami, M Nojima and M Dezawa. (2013). Isolation, culture and evaluation of multilineage-differentiating stress-enduring (Muse) cells. *Nat Protoc* 8:1391–1415.
 111. Wakao S, M Kitada, Y Kuroda, T Shigemoto, D Matsuse, H Akashi, Y Tanimura, K Tsuchiyama, T Kikuchi, et al. (2011). Multilineage-differentiating stress-enduring (Muse) cells are a primary source of induced pluripotent stem cells in human fibroblasts. *Proc Natl Acad Sci USA* 108:9875–9880.
 112. Le Blanc K and M Pittenger. (2005). Mesenchymal stem cells: progress toward promise. *Cytotherapy* 7:36–45.
 113. Li L and H Clevers. (2010). Coexistence of quiescent and active adult stem cells in mammals. *Science* 327:542–545.
 114. Venkatraman A, XC He, JL Thorvaldsen, R Sugimura, JM Perry, F Tao, M Zhao, MK Christenson, R Sanchez, et al. (2013). Maternal imprinting at the H19-Igf2 locus maintains adult haematopoietic stem cell quiescence. *Nature* 500:345–349.
 115. Nadri S, B Kazemi, MB Eslaminejad, S Yazdani and M Soleimani. (2013). High yield of cells committed to the photoreceptor-like cells from conjunctiva mesenchymal stem cells on nanofibrous scaffolds. *Mol Biol Rep* 40:3883–3890.
 116. Nadri S, S Yazdani, E Arefian, Z Gohari, MB Eslaminejad, B Kazemi and M Soleimani. (2013). Mesenchymal stem cells from trabecular meshwork become photoreceptor-like cells on amniotic membrane. *Neurosci Lett* 541:43–48.
 117. Bhartiya D, S Unni, S Parte and S Anand. (2013). Very small embryonic-like stem cells: implications in reproductive biology. *Biomed Res Int* 2013:682326.
 118. Anand S, D Bhartiya, K Sriraman, H Patel, D Manjramkar, G Bakshi, V Dhamankar and P Kurkure. (2013). Quiescent very small embryonic-like stem cells resist oncotherapy and can restore spermatogenesis in germ cell depleted mammalian testis. *Stem Cells Dev* [Epub ahead of print]; DOI:10.1089/scd.2013.0059.
 119. Jones RJ, JE Wagner, P Celano, MS Zicha and SJ Sharkis. (1990). Separation of pluripotent haematopoietic stem cells from spleen colony-forming cells. *Nature* 347:188–189.
 120. Habich A, M Jurga, I Markiewicz, B Lukomska, U Bany-Laszewicz and K Domanska-Janik. (2006). Early appearance of stem/progenitor cells with neural-like characteristics in human cord blood mononuclear fraction cultured *in vitro*. *Exp Hematol* 34:914–925.
 121. Chang YJ, KF Tien, CH Wen, TB Hsieh, and SM Hwang. (2013). Recovery of CD45-/Lin-/SSEA-4+ very small embryonic-like stem cells by cord blood bank standard operating procedures. *Cytotherapy* [Epub ahead of print]; DOI:10.1016/j.jcyt.2013.10.009.
 122. Havens A, H Sun, Y Shiozawa, Y Jung, J Wang, A Mishra, Y Jiang, DW O'Neill, PH Krebsbach et al. (2013). Human and murine very small embryonic-like (VSEL) cells represent multipotent tissue progenitors, *in vitro* and *in vivo*. *Stem Cells Dev* [Epub ahead of print]; DOI:10.1089/scd.2013.0362.

Address correspondence to:

Prof. Mariusz Z. Ratajczak
Stem Cell Institute at James Graham Brown Cancer Center
University of Louisville
500 South Floyd Street, Room 107
Louisville, KY 40202

E-mail: mzrata01@louisville.edu

Received for publication September 27, 2013

Accepted after revision November 27, 2013

Prepublished on Liebert Instant Online December 3, 2013

This article has been cited by:

1. C.E. Gargett, J.A. Deane, K.E. Schwab. 2016. Reply: An update on endometrial stem cells and progenitors by Deepa Bhartiya. *Human Reproduction Update* dmw011. [[CrossRef](#)]
2. Virant-Klun Irma. 2016. Very Small Embryonic-Like Stem Cells: A Potential Developmental Link Between Germinal Lineage and Hematopoiesis in Humans. *Stem Cells and Development* 25:2, 101-113. [[Abstract](#)] [[Full Text HTML](#)] [[Full Text PDF](#)] [[Full Text PDF with Links](#)]
3. Nakatsuka Ryusuke, Iwaki Ryuji, Matsuoka Yoshikazu, Sumide Keisuke, Kawamura Hiroshi, Fujioka Tatsuya, Sasaki Yutaka, Uemura Yasushi, Asano Hiroaki, Kwon A-Hon, Sonoda Yoshiaki. 2016. Identification and Characterization of Lineage –CD45–Sca-1+ VSEL Phenotypic Cells Residing in Adult Mouse Bone Tissue. *Stem Cells and Development* 25:1, 27-42. [[Abstract](#)] [[Full Text HTML](#)] [[Full Text PDF](#)] [[Full Text PDF with Links](#)] [[Supplemental Material](#)]
4. Ahmed Abdelbaset-Ismail, Malwina Suszynska, Sylwia Borkowska, Mateusz Adamiak, Janina Ratajczak, Magda Kucia, Mariusz Z. Ratajczak. 2016. Human haematopoietic stem/progenitor cells express several functional sex hormone receptors. *Journal of Cellular and Molecular Medicine* 20, 134-146. [[CrossRef](#)]
5. Krzysztof Marycz, Katarzyna Mierzejewska, Agnieszka Śmieszek, Ewa Suszynska, Iwona Malicka, Magda Kucia, Mariusz Z. Ratajczak. 2016. Endurance Exercise Mobilizes Developmentally Early Stem Cells into Peripheral Blood and Increases Their Number in Bone Marrow: Implications for Tissue Regeneration. *Stem Cells International* 2016, 1-10. [[CrossRef](#)]
6. Goldenberg-Cohen Nitza, Iskovich Svetlana, Askenasy Nadir. 2015. Bone Marrow Homing Enriches Stem Cells Responsible for Neogenesis of Insulin-Producing Cells, While Radiation Decreases Homing Efficiency. *Stem Cells and Development* 24:19, 2297-2306. [[Abstract](#)] [[Full Text HTML](#)] [[Full Text PDF](#)] [[Full Text PDF with Links](#)] [[Supplemental Material](#)]
7. Rai Rajani, Chandra Vishal, Kwon Byoung S.. 2015. A Hyaluronic Acid-Rich Node and Duct System in Which Pluripotent Adult Stem Cells Circulate. *Stem Cells and Development* 24:19, 2243-2258. [[Abstract](#)] [[Full Text HTML](#)] [[Full Text PDF](#)] [[Full Text PDF with Links](#)]
8. Liu Lu, Wu Lijing, Wei Xi, Ling Junqi. 2015. Induced Overexpression of Oct4A in Human Dental Pulp Cells Enhances Pluripotency and Multilineage Differentiation Capability. *Stem Cells and Development* 24:8, 962-972. [[Abstract](#)] [[Full Text HTML](#)] [[Full Text PDF](#)] [[Full Text PDF with Links](#)]
9. Mierzejewska Katarzyna, Borkowska Sylwia, Suszynska Ewa, Suszynska Malwina, Poniewierska-Baran Agata, Maj Magda, Pedziwiatr Daniel, Adamiak Mateusz, Abdel-Latif Ahmed, Kakar Sham S., Ratajczak Janina, Kucia Magda, Ratajczak Mariusz Z.. 2015. Hematopoietic Stem/Progenitor Cells Express Several Functional Sex Hormone Receptors—Novel Evidence for a Potential Developmental Link Between Hematopoiesis and Primordial Germ Cells. *Stem Cells and Development* 24:8, 927-937. [[Abstract](#)] [[Full Text HTML](#)] [[Full Text PDF](#)] [[Full Text PDF with Links](#)] [[Supplemental Material](#)]
10. Mariusz Z. Ratajczak, Krzysztof Marycz, Agata Poniewierska-Baran, Katarzyna Fiedorowicz, Monika Zbucka-Kretowska, Marcin Moniuszko. 2014. Very small embryonic-like stem cells as a novel developmental concept and the hierarchy of the stem cell compartment. *Advances in Medical Sciences* 59, 273-280. [[CrossRef](#)]
11. Katarzyna Grymula, Maciej Tarnowski, Katarzyna Piotrowska, Malwina Suszynska, Katarzyna Mierzejewska, Sylwia Borkowska, Katarzyna Fiedorowicz, Magda Kucia, Mariusz Z. Ratajczak. 2014. Evidence that the population of quiescent bone marrow-residing very small embryonic/epiblast-like stem cells (VSEs) expands in response to neurotoxic treatment. *Journal of Cellular and Molecular Medicine* 18:10.1111/jcmm.2014.18.issue-9, 1797-1806. [[CrossRef](#)]
12. Parker Graham C.. 2014. Very Small Embryonic-Like Stem Cells: A Scientific Debate?. *Stem Cells and Development* 23:7, 687-688. [[Citation](#)] [[Full Text HTML](#)] [[Full Text PDF](#)] [[Full Text PDF with Links](#)]
13. Havens Aaron M., Sun Hongli, Shiozawa Yusuke, Jung Younghun, Wang Jingcheng, Mishra Anjali, Jiang Yajuan, O'Neill David W., Krebsbach Paul H., Rodgers Denis O., Taichman Russell S.. 2014. Human and Murine Very Small Embryonic-Like Cells Represent Multipotent Tissue Progenitors, In Vitro and In Vivo. *Stem Cells and Development* 23:7, 689-701. [[Abstract](#)] [[Full Text HTML](#)] [[Full Text PDF](#)] [[Full Text PDF with Links](#)] [[Supplemental Material](#)]
14. Szade Krzysztof, Bukowska-Strakova Karolina, Nowak Witold Norbert, Jozkowicz Alicja, Dulak Jozef. 2014. Comment on: The Proper Criteria for Identification and Sorting of Very Small Embryonic-Like Stem Cells, and Some Nomenclature Issues. *Stem Cells and Development* 23:7, 714-716. [[Citation](#)] [[Full Text HTML](#)] [[Full Text PDF](#)] [[Full Text PDF with Links](#)]
15. Deepa Bhartiya, Akash Mundekar, Vaibhav Mahale, Hiren Patel. 2014. Very small embryonic-like stem cells are involved in regeneration of mouse pancreas post-pancreatectomy. *Stem Cell Research & Therapy* 5, 106. [[CrossRef](#)]